



Annual Report 2017

THE FRYSKE AKADEMY IN 2017

The Fryslân Case

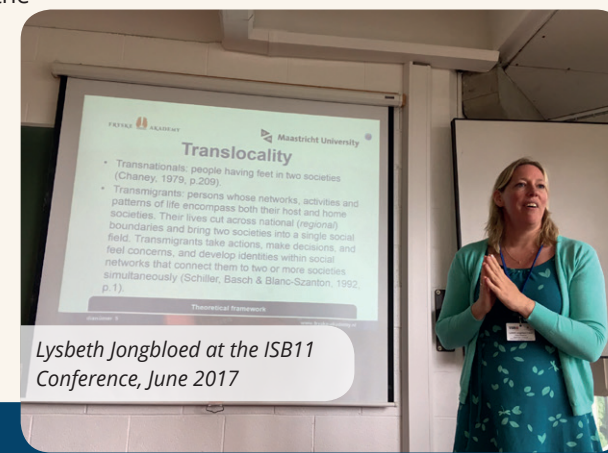
The Fryske Akademy is a multidisciplinary institute for the humanities and social sciences focusing on the Fryslân case. Change processes in the Frisian language, multilingualism, history, and regional identity in past and present are studied from a comparative perspective. As such, the Fryske Akademy carries out fundamental and innovative (commissioned) research which directly benefits society. The Akademy delivers innovative research results, carries out policy-supporting research, and develops digital research instruments and collections; all this to bring the Fryslân case to the regional, national, and international fore.

Institutional and Social Integration and Collaboration

The Province of Friesland and the Royal Netherlands Academy of Arts and Sciences (KNAW) are the two public bodies funding the Fryske Akademy. Under the Administrative Agreement on the Frisian Language and Culture (*Bestuursafpraak Friese Taal en Cultuur*), concluded between the State and the Province, the Fryske Akademy is affiliated with the KNAW. The ties with the Province of Friesland were strengthened, as in previous years, by the award of additional research funding.

Research

The research projects are structured around seven themes: multilingualism and language acquisition; language description and standardisation; synchrony and diachrony in language; medieval legal traditions; power, possession, and space in Friesland; culture in early-modern Friesland; and economic clusters. The Fryske Akademy is the beating heart of Frisian linguistics, and Mercator is a recognised European centre of excellence in multilingualism and language acquisition. With HISGIS (Historical Geographical Information System), it is developing a digital processing package for historical and spatial information of national importance. The city of Dokkum was the first to supplement the HISGIS with a wealth of historical information about its residents, linked to the maps of the project 'Friesland 1750-1900: people and plots'. The Fryske Akademy collaborated with the Northeast Friesland Regional Archives on this project.



Lysbeth Jongbloed at the ISB11 Conference, June 2017

The Online Dutch-Frisian Dictionary (2017-2022) was launched and the Frisian Language Portal (www.taalportaal.org) was expanded. Investments were made in the digital research infrastructure: expanding HISGIS, initiating improvement of the Frisian language databases, and developing software for vowel visualisation. The research focusing on the region has an international slant and resulted in policy reports and scientific publications. The quality of the publications increased, and the researchers made valued contributions to international conferences. The Fryske Akademy participated in international workshops, joined in grant applications, and welcomed and accommodated several foreign researchers. We worked on various projects in the context of Leeuwarden-Fryslân 2018 Cultural Capital Program *Lân fan taal*. In 2017, the Akademy was very successful in raising external funds at the regional, national, and European level.

Core Publications

- **Bosma, E. (2017)** *Bilingualism and Cognition: the acquisition of Frisian and Dutch*, Amsterdam, UvA, 168 p. (doctoral thesis)
- **Hoekstra, E. (2017)**. Synchrony/diachrony, frequency and analogy. *Nederlandse Taalkunde*, 22(1), 75-78. DOI: 10.5117/NEDTAA2017.1.HOEK
- **Janssen, L. (2017)**. The Rise of Auxiliary Sciences in Early Modern National



Historiography: an 'Interdisciplinary' Answer to Historical Scepticism. *History of European Ideas*, 43(5), 427-441. DOI: 10.1080/01916599.2017.1365744

- **Jongbloed-Faber, L., van Loo, J., & Cornips, L. (2017)**. Regional languages on Twitter: A comparative study between Frisian and Limburgish. *Dutch Journal of Applied Linguistics*, 6(2), 174-196.
- **de Langen, G., & Mol, J. A. (2017)**. Church Foundation and Parish Formation in Frisia in the Tenth and Eleventh Centuries: A Planned Development? *The Medieval Low Countries. An Annual Review*, 4.

- **Mol, J. A. (2017)** *De Friese volkslegers tussen 1480 en 1560*. Verloren, 365 p. (Fryske Akademy; vol. 1100)
- **Nijdam, J. A., Savelkoul, J., & Breuker, P. H. (2017)**. The Manuscript Collection of the Frisian State Historian Simon Abbes Gabbema (1628-1688) from an Old Frisian Perspective. *Amsterdamer Beiträge zur älteren Germanistik*, 77, 303-332. DOI: 10.1163/18756719-12340077
- **Pinget, A. C. H., Kager, R. W. J., & Van de Velde, H. (2017)**. Regional differences in the perception of a consonant change in progress. *Journal of Linguistic Geography*, 4(2), 65-75. DOI: 10.1017/jlg.2016.13
- **Schoormann, H., Heeringa, W. J., & Peters, J. (2017)**. Standard German vowel productions by monolingual and trilingual speakers. *International Journal of Bilingualism*. DOI: <http://dx.doi.org/10.1177/1367006917711593>
- **Sloos, M. (2017)**. Merger and reversal of the BAREN and BEEREN vowels: The role of salience. *Studia Linguistica*.
- **Stapel, R. J. (2017)** *The Late Fifteenth-Century Utrecht Chronicle of the Teutonic Order: Manuscripts, Sources, and Authorship*, Leiden University. 463 p. (doctoral thesis)

- **Visser, M. (ed.) & Gross, M. (2017)** *Romansh. The Romansh Language in Education in Switzerland*. Leeuwarden/Ljouwert: Mercator European Research Centre on Multilingualism and Language Learning. 47 p. (Regional Dossiers series)

This was the 50th Regional Dossier published by Mercator. In this series, the education in a minority language in a specific region in Europe or beyond is mapped out. The fixed structure of the dossiers allows for easy comparison between the various regions.



Science Prize

In May, Evelyn Bosma won the Campus Fryslân Science Prize. This biennial prize was awarded for the first time in 2017 and is an incentive for active young researchers who stand out on account of their innovative, socially-relevant, and high-profile research.

>>>

>>> continue reading

Doctoral and Post-Doctoral Research

Rombert Stapel defended his PhD thesis on *The Late Fifteenth-Century Utrecht Chronicle of the Teutonic Order: Manuscripts, Sources and Authorship* at Leiden University on 25 January and graduated with honours. Prof. Hans Mol was his supervisor.

Evelyn Bosma obtained her PhD for her thesis *Bilingualism and Cognition: The Acquisition of Frisian and Dutch*, supervised by Prof. Arjen Versloot at the University of Amsterdam on 2 October. The ceremony took place in the Leeuwarden City Hall.



PhD defense Evelyn Bosma, October 2, 2017

Current PhD Trajectories

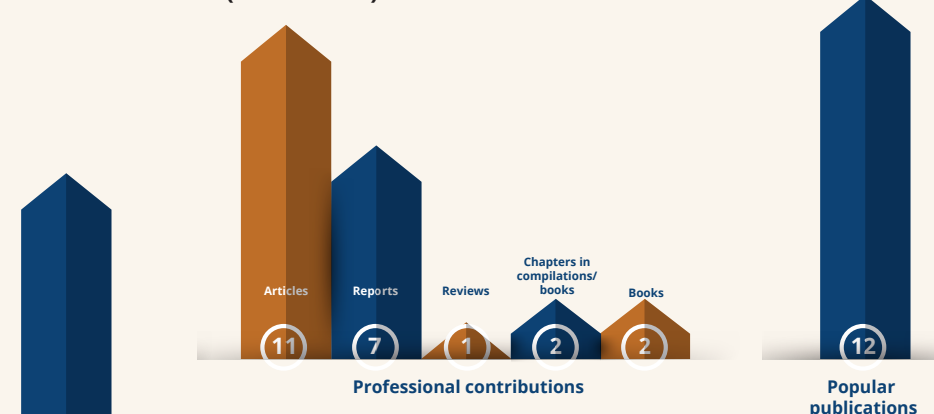
- *De Engelse taalontwikkeling van vloeiend en niet-vloeiend tweetalige jongvolwassenen* ('The English Language Development of Fluent and Non-Fluent Bilingual Young Adults') – Mirjam Günther-van der Meij
- *Middelieuwse agrarische veenontginningen in Zuid-Friesland en de kop van Overijssel (1000-1400)* ('Medieval Agrarian Peat Reclamations in Southern Friesland and the North of Overijssel (1000-1400)') – Dennis Worst

- *Language Preservation and Language Loss in Frisian: a socio-linguistic profile* – Nika Stefan
- *Changes in Modern Frisian Verbal Inflection* – Anne Merkuur
- *Regionaal beleid en economische ontwikkeling* ('Regional Policy and Economic Development') – Bart Hogeboom
- *Het gebruik van Friese varianten op sociale media* ('The Use of Variants of the Frisian Language in Social Media') – Lysbeth Jongbloed-Faber
- *Learner Modelling and Language Contact in Syntac: word order in verbal clusters in the Dutch-Frisian continuum* – Jelke Bloem
- *Kennisgedreven innovatie in de Friese zuivelsector, 1960-2008* ('Knowledge-Driven Innovation in the Frisian Dairy Industry, 1960-2008') – Ronald Plantinga

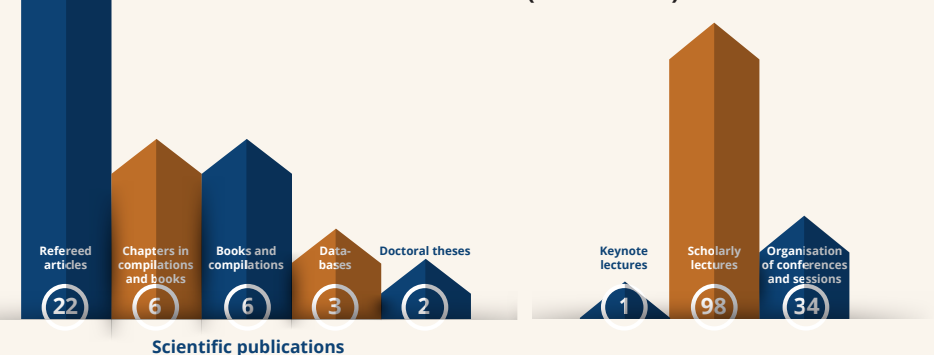
Post-doctoral research

- Jelske Dijkstra - Dutch-Frisian code switching (FAME!; Frisian Audio Mining Enterprise)
- Joana Duarte - Multilingualism in education and society
- Lydia Janssen - The significance of the Viglius College for cultural and intellectual life in early-modern Friesland (16th to 18th century).
- Jelte Olthof - Political culture in early modern Friesland
- Marjolaine Sloos - The phonetics and phonology of bilingualism

Publications (in numbers)



Lectures and Conferences (in numbers)



In addition, lectures for the general public were hosted near-weekly, and regular contributions were published in the regional and national media.



Farewell lecture Rolf Bremmer in Leiden, June 16, 2017

Website and Social Media

On social media, the growth of the Fryske Akademy's following persisted. On Twitter, the number of followers rose from 1065 to 1241, and on Facebook from 765 to 859. The number of followers of the @taalwebfrysk Twitter account increased to 149 followers.

Website	Unique Visitors
Fryske Akademy	140,666
Mercator Network	60,664
Network of Schools	38,152
Mercator Research	84,616
HISGIS	105,278
Taalweb	68,596
Gesnet	5,222
Total	503,194

Statement of Income and Expenditure

	2017	Realisation	Budget	Difference	Percentages
Income		3.751.784	3.450.870	300.194	8,7%
Expenditure		4.184.205	3.767.328	-416.877	-11,1%
Balance		-432.421	-316.458	-115.963	

Since the financial year 2016, the assets are used in part to fill strategic vacancies. Some of the costs budgeted for 2016 were not incurred until 2017. This explains the negative result for 2017.



Visit of pupils of CSG Liudger Burgum, April 2017

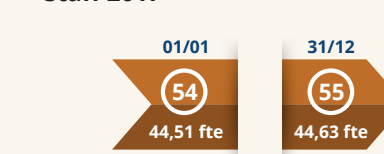
Members

On Akademy Day, 15 September 2017, the following three new members were appointed to the Fryske Akademy:

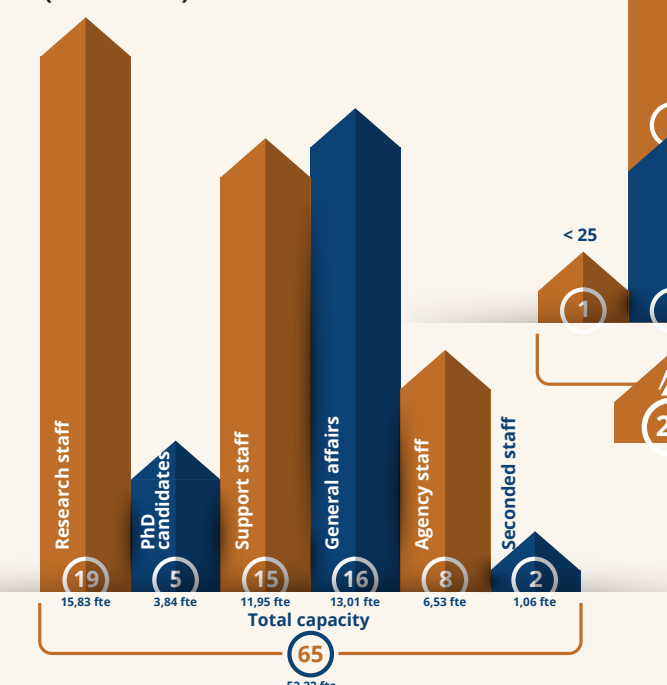
- Foppe de Haan on account of his contribution to the Frisian culture.
- Mr Rienk Wegener Sleeswijk on account of his great and continuing interest in Frisian science and in Frisian culture in general.
- Prof. Cisca Wijmenga on account of her scientific contributions.

By the end of 2017, the Fryske Akademy had 1430 donors, 285 of whom were members of the Akademy.

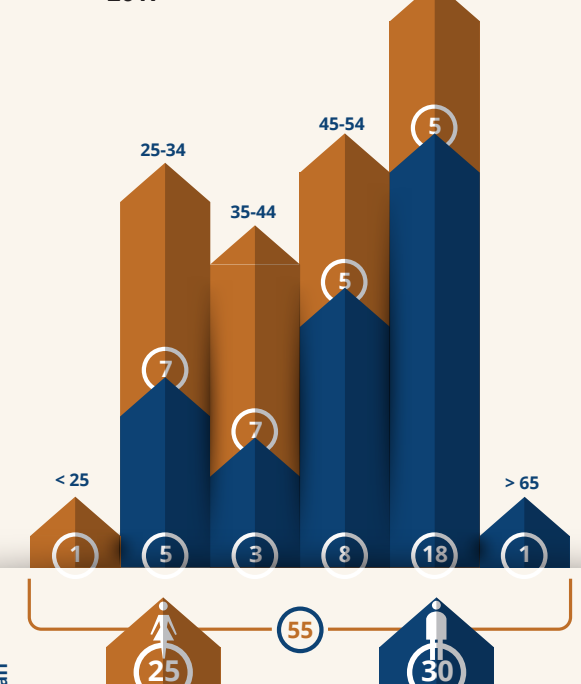
Staff



Staff composition (31/12/2017)



Distribution by Age and by Gender 2017



Members of the Supervisory Board

- **Prof. Jacob Fokkema** (chairman)
- **Wybren Eijzena** (from 11 April onwards)
- **Seerp Leistra** (from 11 April onwards)
- **Houkje Rijpstra**
- **Prof. Anthonya Visser** (from 11 April onwards)

Managing Director

- **Prof. Hanno Brand**
- In February, Hanno Brand was appointed endowed professor in the field of **Fryslân in the trade networks of pre-industrial Europe (1000-1800)** at the University of Groningen.